

RESILIENCE HUBS

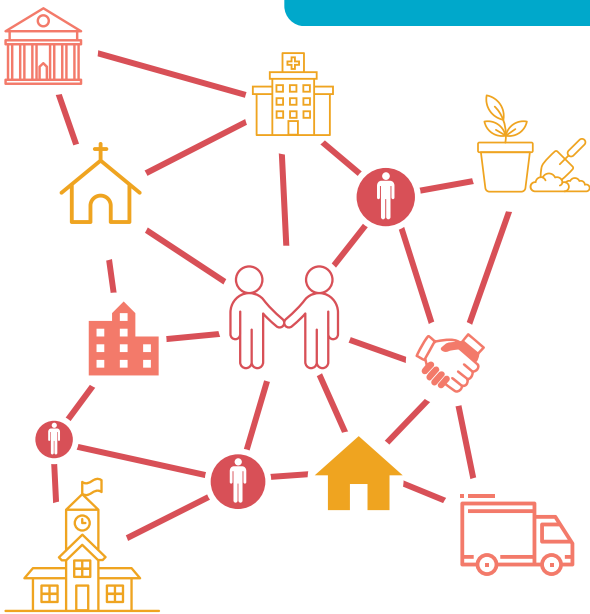
What are they?

Resilience hubs are community based locations that nourish existing relationships and trust in the community to help prepare for the impacts of climate change and other disruptions. Hubs look different based on community needs. A hub could take on roles such as disaster preparedness, job training and recruitment, or social & emotional care for community members.

What can they do?

Resilience hubs reduce the burden on emergency planners, and put control back into the community's hands. By integrating care and preparedness into community institutions, neighbors and peers are better at communicating and providing for one another.

A Network of Support



A resilience framework attempts to create an established ecosystem of support for their communities.

- Instead of each hub filling every gap there is, they all work together to communicate and provide for the gaps that their communities experience.
- One hub may allow people to charge cell phones when the power goes off, and another may have a community garden.
- The opportunities for hubs are endless, and are all dependent on the needs and wants of the people it serves.

PILLARS OF RESILIENCE

COMMUNITY LEADERSHIP

Community members are already experts in what they need and what's going on in their neighborhoods.

By elevating and supporting leadership that already exists, resilience hubs are more sustainable and long lasting.

OFF-GRID RENEWABLE ENERGY & BATTERY STORAGE

Large-scale utility grids are prone to disruptions and black outs related to climate change. This includes storms, wildfires, earthquakes, etc.

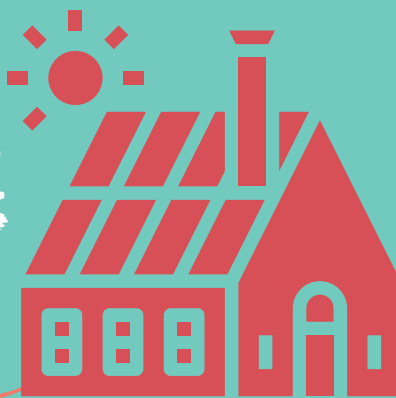
By having local energy in resilience hubs that keeps the power on during disruptions, they can provide life-saving resources, such as communication services, first aid, and refrigeration.

LOCAL PARTNERSHIPS

We are all stronger when we work together.

When lots of folks get involved, it means that there's more hands on deck, more people with expanded access to critical resources, and more communal responsibility.

Resilience hubs aren't just places to survive, but rather to thrive.



Want to know more?

Go to our website at

www.rogueclimate.org/resilience-hubs, or contact:

Maeve Hogan

maeve@rogueclimate.org

541-301-8139



Rogue
Climate